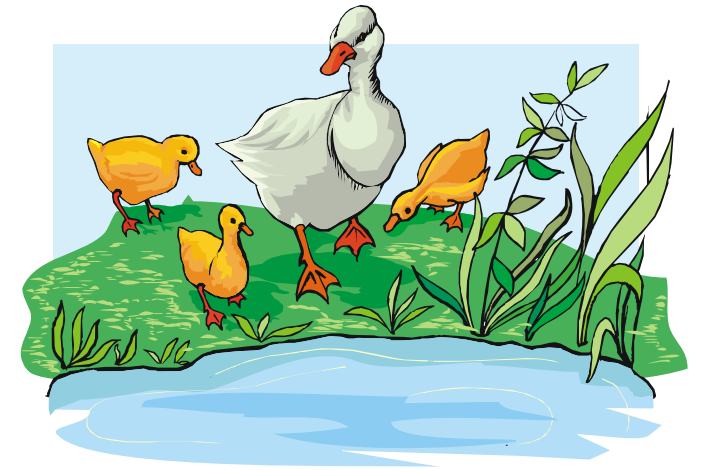


# HELP! I've found a baby bird!



Wild baby birds should be with their parents. They do a better job of raising them than we do. Here is how to determine whether the baby bird needs a helping hand or not. If you should have any doubts or questions, please call the Wildlife Rescue Association.

## 1 IS THERE AN OBVIOUS INJURY?

If there is an obvious injury such as blood, open wounds, limping, dragging a wing or unconsciousness then the baby bird definitely needs help! Please contact WRA immediately and arrange for the bird to be brought into care.

## 2 IS THE BIRD A FLEDGLING OR A NESTLING?

Depending on its age, a bird may or may not be naturally living on the ground and not require assistance. A **nestling** bird is one which is naked, or partially feathered. A nestling will also be unable to stand or keep itself warm and must be in the nest in order to survive. If it is a nestling, please determine if the nest is nearby. A **fledgling** bird is well-feathered, able to stand on its own and hop around, but is not able to fly well. It is perfectly normal for a fledgling bird to be on the ground, as its parents will be teaching it to fly and feed from this location. If you have found a fledgling bird, please try and determine if the adult birds are nearby.

## 3 IS THE NEST STILL INTACT?

If you have determined you have a nestling bird, then the first course of action is to try and return the bird to its nest. If you spot the nest nearby and it is accessible, gently pick up the nestling and place it back in the nest. Unlike mammals, birds will not reject the baby if you have handled it. If the nest has been destroyed and the parents are still nearby you may rebuild the nest with handy materials, or even a small box. If there is no sign of the nest or parents, please contact WRA to have the bird brought into care.

## 4 ARE THE PARENT BIRDS AROUND?

If you have found a baby bird, nestling or fledgling, it is important to determine if the parents are still nearby. If you have a nestling bird and the parents are still nearby, you may either locate or rebuild the nest and place the young bird inside. If you have a fledgling bird and the parents are nearby, then that bird is going through its natural stage of development and should be left on the ground near the parents. The adults will naturally teach their young to fly from the ground and depending on the species, this could take as long as a week! You can help out these fledgling birds by keeping your cats indoors and letting your neighbours know the birds are in the area.



*Thanks for keeping an eye on  
our feathered friends!*



**PLEASE CALL WRA FOR FURTHER ADVICE  
604-526-7275**

*Wildlife Rescue*  
ASSOCIATION

Sponsored by:  
 **Friends of the  
Environment  
Foundation**